

五条大宮 (建築条件付売土地)

<住所> 京都市下京区中堂寺前田町

<交通> JR「丹波口」駅 歩5分

阪急「大宮」駅 歩13分

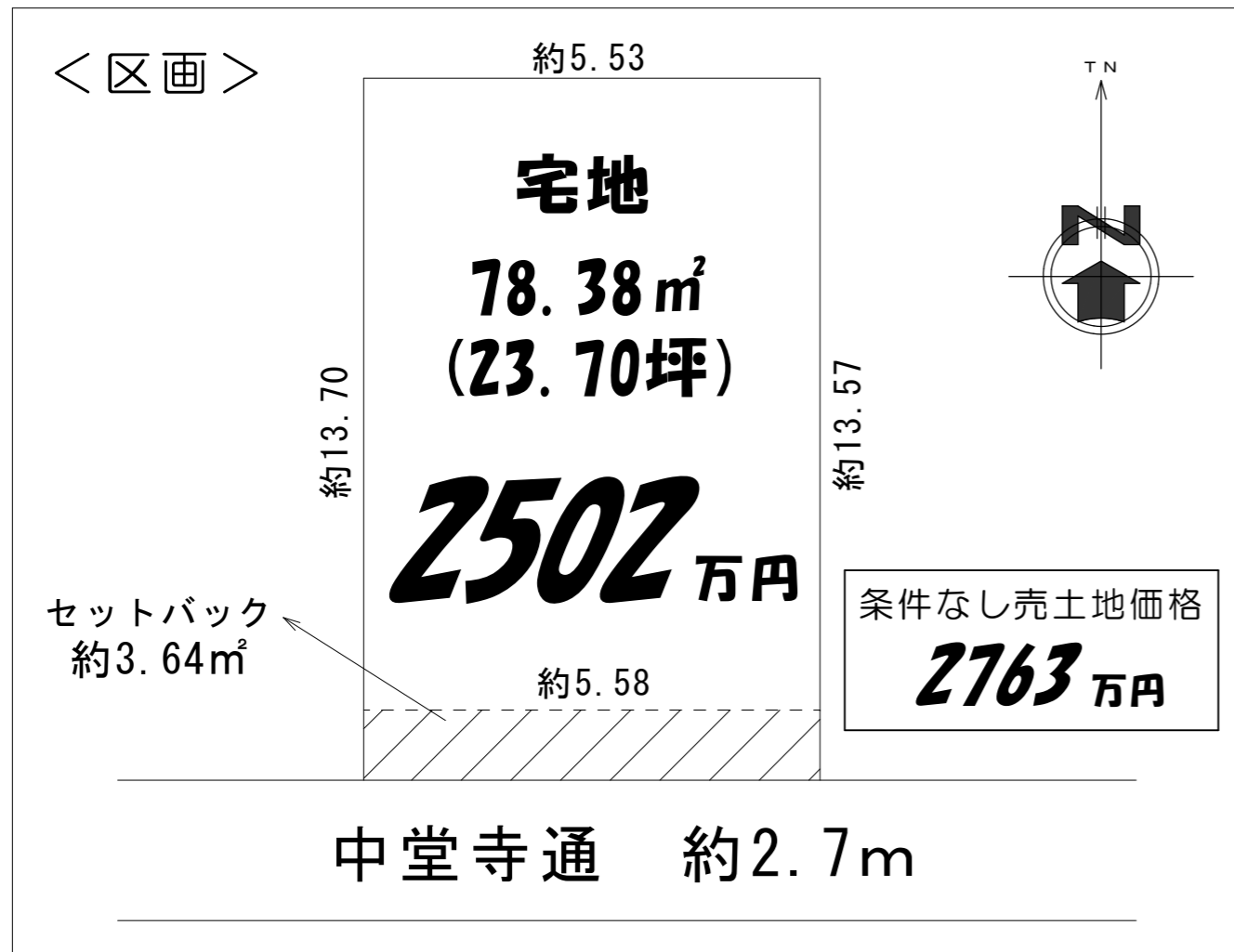
<学区> 光徳小学校、松原中学校

<用途> 第1種住居地域、準防火地域

20m第2種高度地区

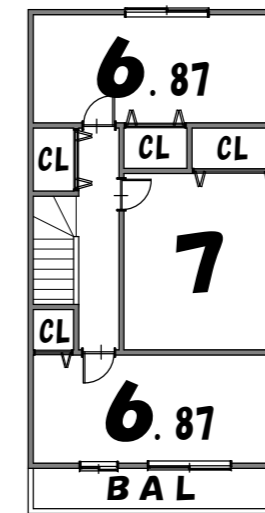
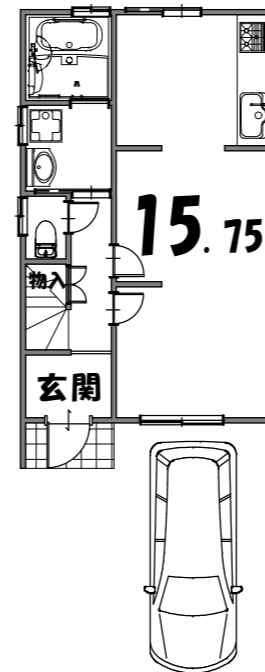
市街地型美観形成地区

建ぺい率60%、容積率160%



プラン1

1505万円

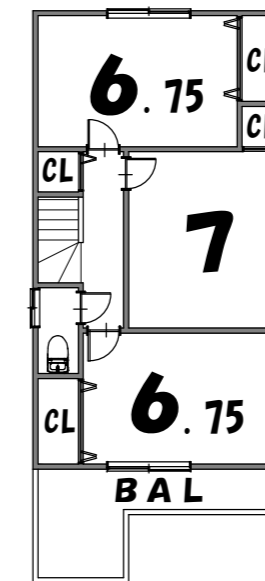
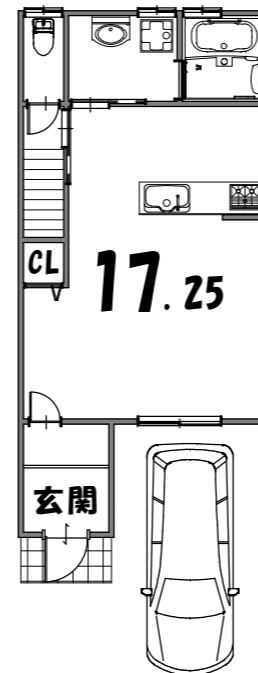


1F : 40.10m²
吹抜 : 4.45m²
2F : 44.55m²
延床 : 84.65m²
(25.60坪)

*このプランは計画段階のため、行政指導・建築工事に伴い変更の可能性があります。

プラン2

1561万円



1F : 44.14m²
吹抜 : 2.83m²
2F : 44.55m²
延床 : 88.69m²
(26.82坪)

*このプランは計画段階のため、行政指導・建築工事に伴い変更の可能性があります。

【売主】 京都府知事 (13) 3845号
株式会社 平松住宅
京都市中京区壬生檢町1
TEL : 075-323-2533
FAX : 075-311-7837
http://www.hiramatsu-j.jp

自由設計・設備充実・基本外構工事込

This is a detailed street map of the Omamiya area in Kyoto. It shows a grid of streets with numerous building footprints, lot numbers, and street names. Key streets include 大宮通 (Omamiya-dori) running vertically, and 中堂寺前町 (Nakadōjiraemachi), 下長福寺町 (Shimo-Nagafukujiraemachi), and 下五条町 (Shimo-Yoji-chō) running horizontally. The map is densely packed with buildings, many of which are labeled with names and numbers. Notable landmarks include the 武田医院 (Takeda Hospital) and 京都市立中央信用金庫 (Kyoto Municipal Central Credit Union). The map also shows various smaller streets and alleys, as well as utility lines and streetlights.

This is an inset map located at the bottom of the page, showing a different section of the city. It features a grid of streets and building footprints, similar to the main map. The inset map is oriented vertically and shows a different set of streets and buildings. It includes labels for various streets and buildings, providing a more detailed view of a specific area. The inset map is located in the bottom right corner of the page.